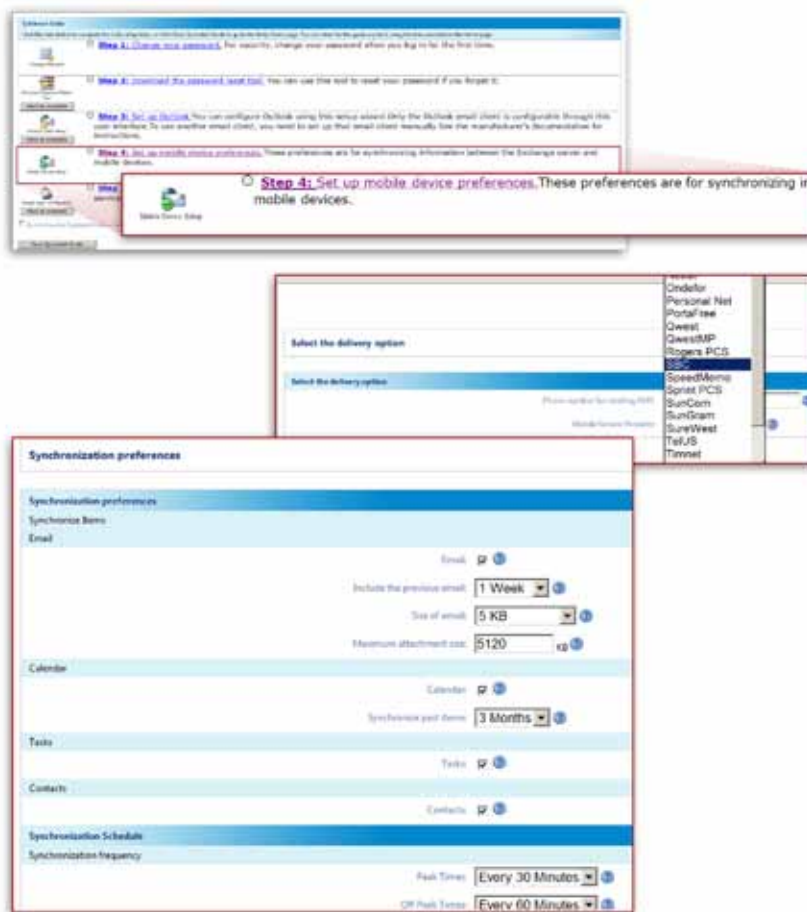


## Mobility Manager

From iPhone to BlackBerry - “SmartPhones” are critical business tools. They also pose a significant security risk if they are lost or stolen.

Rapid mobilization of the workforce is causing the number and type of different devices to increase. How can IT effectively manage both the growing array of devices as well as the security risk they represent?

Ensime Unify Mobility Manager provides a complete, role-based mobility management console with functionality tailored for everyone, from system administrators and help desk down to end users - all through an easily accessible web-based interface.



“Ensime Unify significantly reduces the time required for device configuration. Users now manage their own accounts based on standard IT policy, improving response time while giving IT a complete audit trail. It’s a great addition to our environment. We can handle employee growth without adding new IT staff.”

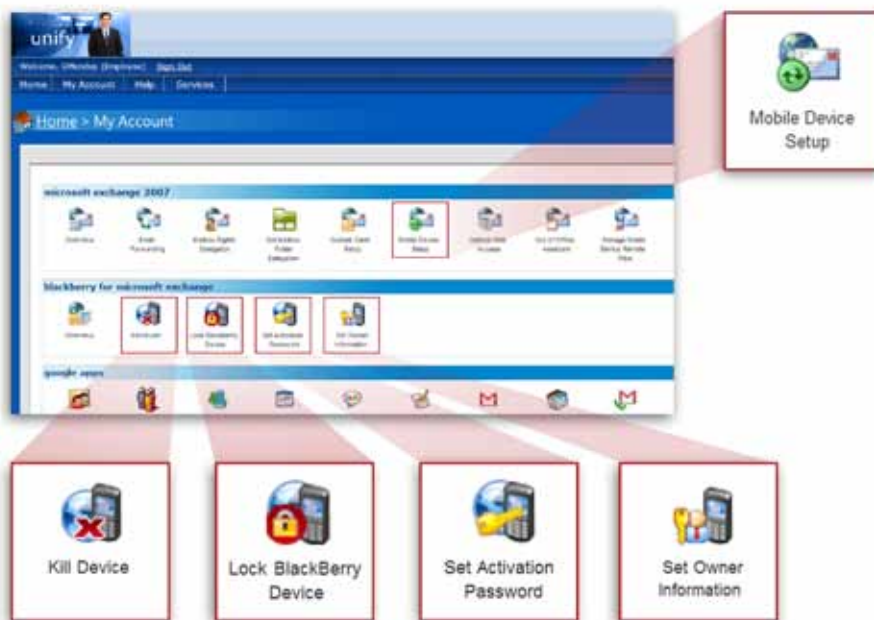
Davis Truong,  
Senior System Engineer,  
CashEdge



## Reduce IT Management Support Burden

Create an efficient method of getting mobile devices into employees hands. With Ensim Unify Mobility Manager, many functions can be delegated to the end user, reducing IT's overall involvement.

- Activate and update devices remotely
- Create device provisioning and de-provisioning policies
- Set automatic alerts and notifications
- Securely delegate management tasks to help desk and end users



## Avoid Security Problems

Every packet of data that travels outside the firewall represents a potential breach of security and privacy. Ensim Unify Mobility Manager is designed to protect your intellectual property and increase security:

- Remote lock/wipe lost or stolen devices at any time
- Generate and set user activation passwords
- Enforce strong password policies

### Supported Devices:

- Windows Mobile
- BlackBerry
- iPhone w/ Active Sync

**Microsoft**  
**GOLD CERTIFIED**  
*Partner*

Ensim Unify™ are registered trademarks of Ensim Corporation and Ensim logos are trademarks of Ensim Corporation. Google Apps™ and Gmail™ are registered trademarks of Google Inc. Microsoft™ and Active Directory® are registered trademarks of Microsoft® Corporation.